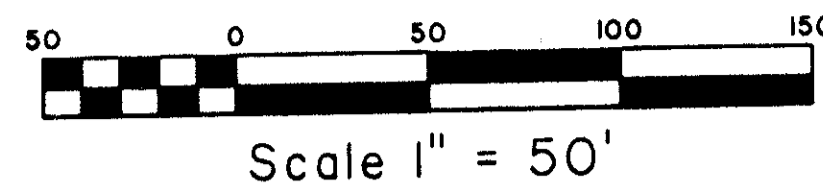
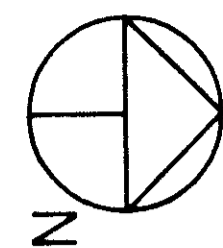


# WEST BOYNTON PLAT NO. 2C REPLAT

PALM BEACH COUNTY, FLORIDA

BEING A REPLAT OF A PORTION OF WEST BOYNTON PLAT NO. 2 C AS RECORDED IN PLAT BOOK 15, PAGE 14, PUBLIC RECORDS OF PALM BEACH COUNTY, FLORIDA, LYING IN SECTION 19, TOWNSHIP 45 SOUTH, RANGE 43 EAST, PALM BEACH COUNTY, FLORIDA.  
SHEET 2 OF 2 SHEETS



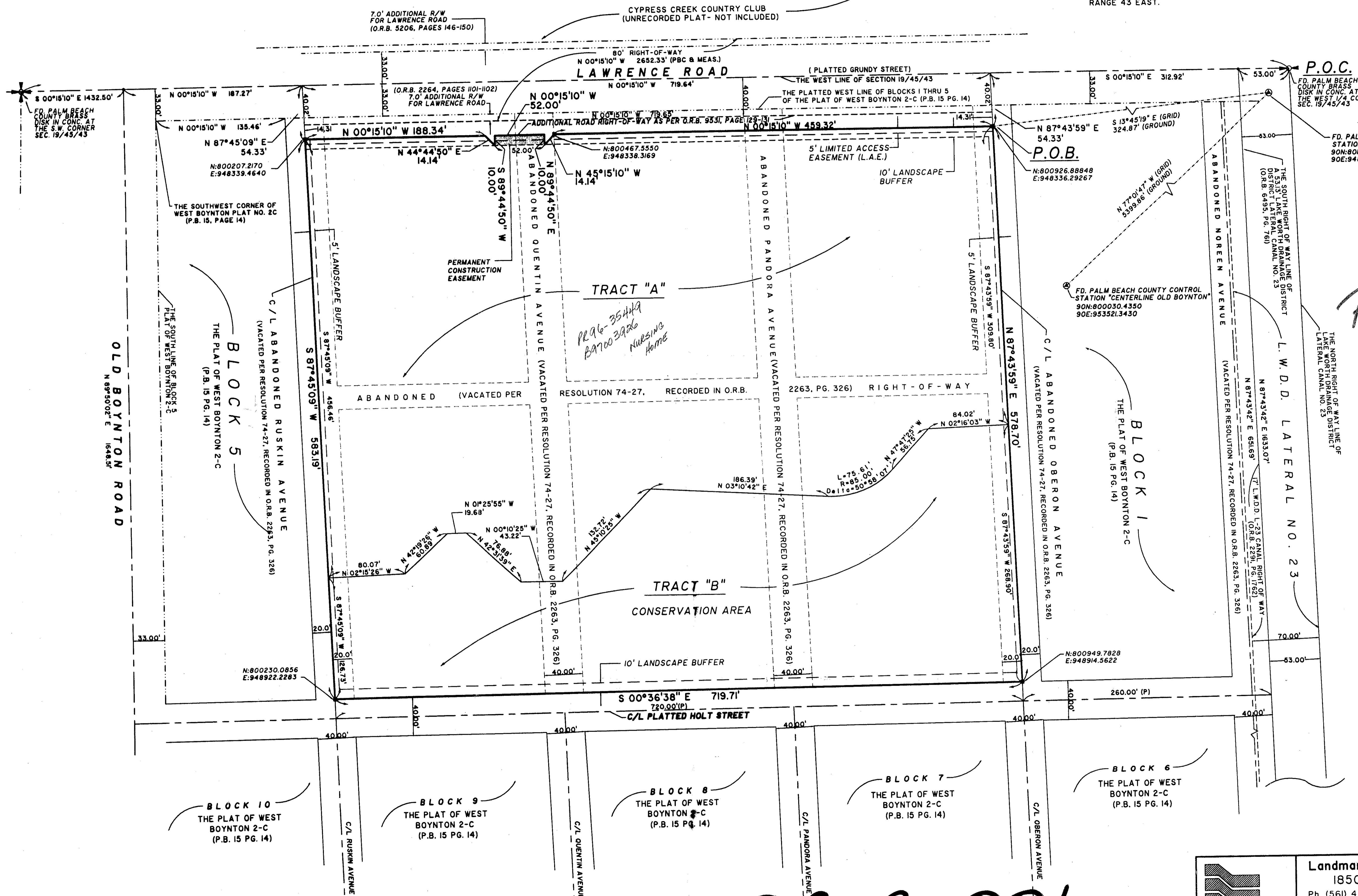
COORDINATE NOTE:  
STATE PLANE COORDINATES SHOWN ARE GRID DATUM, NAD 83 1990 ADJUSTMENT, FLORIDA EAST ZONE, COORDINATE SYSTEM 1983 STATE PLANE TRANSVERSE MERCATOR PROJECTION.  
LINEAR UNIT = US SURVEY FEET  
ALL DISTANCES ARE GROUND  
SCALE FACTOR = 1.00003900  
GROUND DISTANCE X SCALE FACTOR = GRID DISTANCE

N 00°15'10" W (PLAT BEARING) -00°00'01" CLOCKWISE BEARING ROTATION (PLAT-TO-GRID)  
N 00°15'09" W (GRID BEARING)

THE WEST LINE OF SECTION 19, TOWNSHIP 45 SOUTH, RANGE 43 EAST.

13

STATE OF FLORIDA  
COUNTY OF PALM BEACH  
THIS PLAT WAS FILED FOR RECORD AT \_\_\_\_\_  
M. THIS \_\_\_\_\_ DAY OF \_\_\_\_\_ 19\_\_\_\_  
AND DULY RECORDED IN PLAT BOOK NO. \_\_\_\_\_  
ON PAGE \_\_\_\_\_  
DOROTHY H. WILKEN, CLERK OF THE CIRCUIT COURT  
BY \_\_\_\_\_ D.C.



*PET. 95-90  
5/2/2/H  
COMMERCIAL FILES  
NURSING HOME*

*SUBDIVISION West Boynton Plat #2C  
BOOK 82 PAGE 13  
FLOOD MAP # 1906  
QUAD # 20 ZONING RS  
SE 79-220 ZIP CODE  
PLAT NAME West Boynton Plat #2C Replat*

0707-001

82/13

**Landmark Surveying & Mapping Inc.**  
1850 Forest Hill Boulevard  
Ph. (561) 433-5405 Suite 100 W.P.B. Florida

**WEST BOYNTON  
PLAT NO. 2 C  
REPLAT**